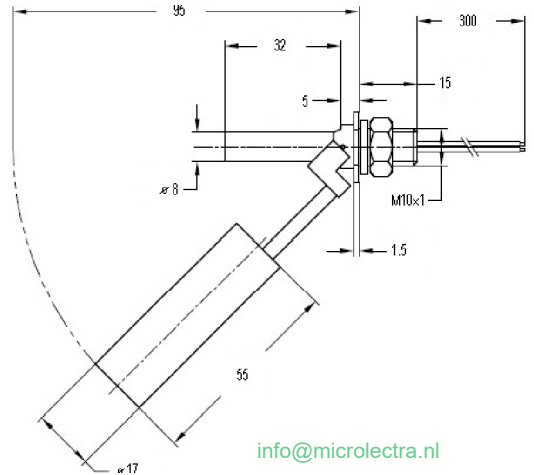


IMN 50 INOX H

Microlectra bv.



LEVEL MAGNETIC SWITCH



www.microlectra.nl

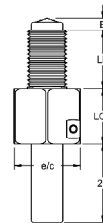
info@microlectra.nl

General	Operating principle	The magnetic sensors are based IMN level in the action of a reed switch located inside the tube, which are activated by a magnet housed inside the float and moves due to the thrust of the liquid.
	Application	<ul style="list-style-type: none"> For the detection of a single point liquid level. Used in maneuvers for filling, emptying, overflow alarm, etc..

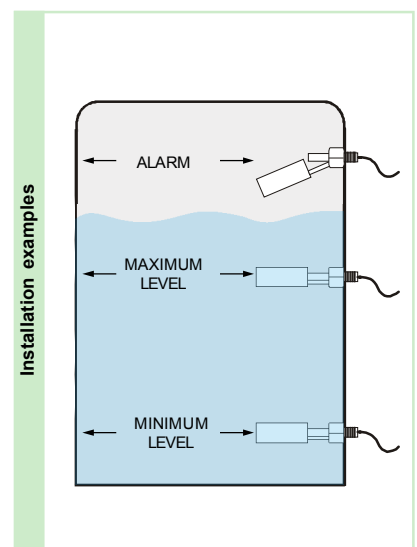
Housing	Electrical connection	By two-wires hose.
	Length	300 mm.
	Material cable (Temperature)	Silicone UL1 015 22AWG (125 °C)

Body	Guide tube	SS AISI304 (1.4301)
	Temperature	-40..+125 °C
	Mounting position	Horizontal ±15°
	Protection	IP68 (in the submerged parts)

Process connection	Thread	M10x1
	Material	SS AISI304 (14301)
	E (mm)	3
	LR (mm)	15
	LCP (mm)	1.5
	∅c (mm)	0



Float	Material	SS AISI304 (14301)
	Dimension (mm)	∅17x55
	Pressure (kg/cm ²)	5 kg/cm ²
	Density (g/cm ³)	0,7 g/cm ³



Contacts	Class	50 W VA / 230 VAC-0,5A	
	Type	NO or NC according to sensor position	
	Position		

Ordering code	IMN 50 INOX H
---------------	---------------