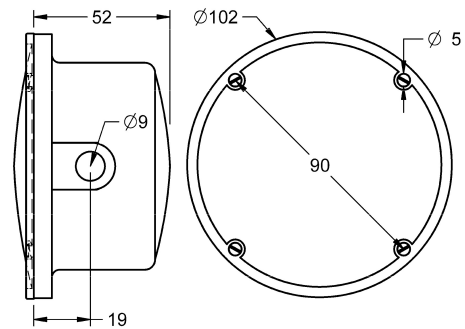
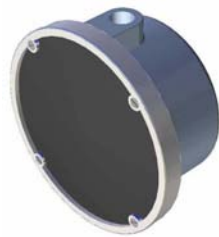
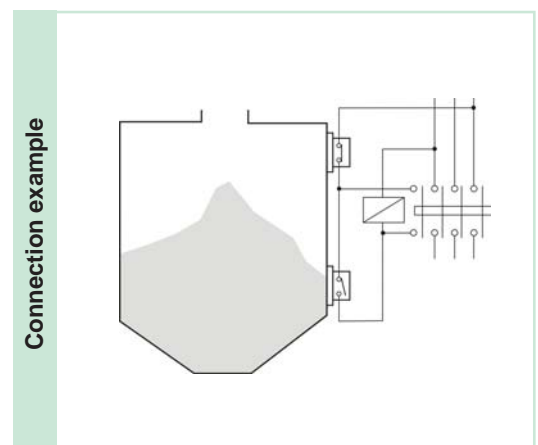
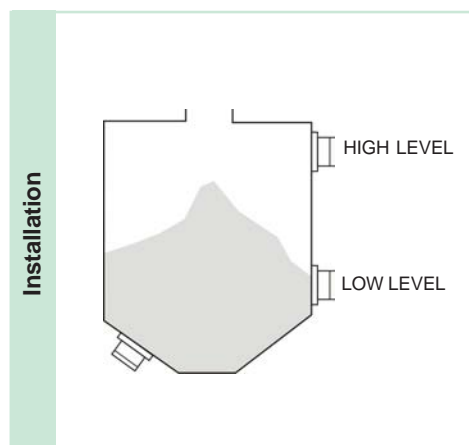


CNM 10

LEVEL CONTROL FOR SOLIDS



Application field	Controller by membrane for the level control of materials in bulk of easy flow, at atmospheric pressure.
Operating principle	The membrane must be in touch with the material to be controlled. As the material that enters the silo accumulates and covers the membrane, the pressure that exerts the material pushes back the membrane pressing the mechanism that drives a switch. This switch is used to operate visual or acoustic signals, or to start the loading and unloading mechanisms in silos and containers.
Body material	Plastic.
Membrane	Ø102 mm. Standard nitrile. Neoprene, viton, stainless steel, etc., on request.
Operating temperature	-10..+60°C
Output contact	SPDT micro-switch 6 A/250 V
Pressure	Adjustable, minimum 10 g/cm ³
Sensitivity	By adjusting the screw over the spring in the regulation mechanism, the material must push strongly or weakly for acting the switch.
Protection	IP40
Cables input	Hole Ø9 mm.
Sensibility	Moving the holding support to the central part, the material must push strongly for acting the switch. Models with adjustable sensibility: By adjusting the nut of the regulation mechanism, the material must push strongly or weakly for acting the switch. Models with pressure to 10 g.: It is not recommended to adjust the sensitivity. They are pre-adjusted to the maximum sensibility.
Installation	These equipments must be installed with the membrane in vertical position to assure the release of the switch when the tank become empty.



Microlectra bv.
Augustapolder 12.
2992 SR Barendrecht
The Netherlands
www.microlectra.com
info@microlectra.nl